

The UN sustainable development goals & philanthropy

A Māori social enterprise perspective



Philanthropy
Summit 2019

The Future of Trust

*Te pono, te tika, te māramatanga
me te aroha anō o tēhēhi ki tēhēhi*

AMP CAPITAL

perpetual
guardian

SMARTSHARES

BLOOMSBURY
ASSOCIATES

fi360[®]
global
fiduciary insights

DEVON
FUNDS.

Kiwi
Invest.

SmartyGrants
Software & data science for revolutionary grantmakers

an enterprise of
ourcommunity.com.au
software and fair profits go for help

MILFORD

Harbour
ASSET MANAGEMENT

blackbaud[®]
power your passion

P I M C O

thankyou
payroll

fisher funds

FLUXX

SUE BARKER
CHARITIES LAW

MERCER

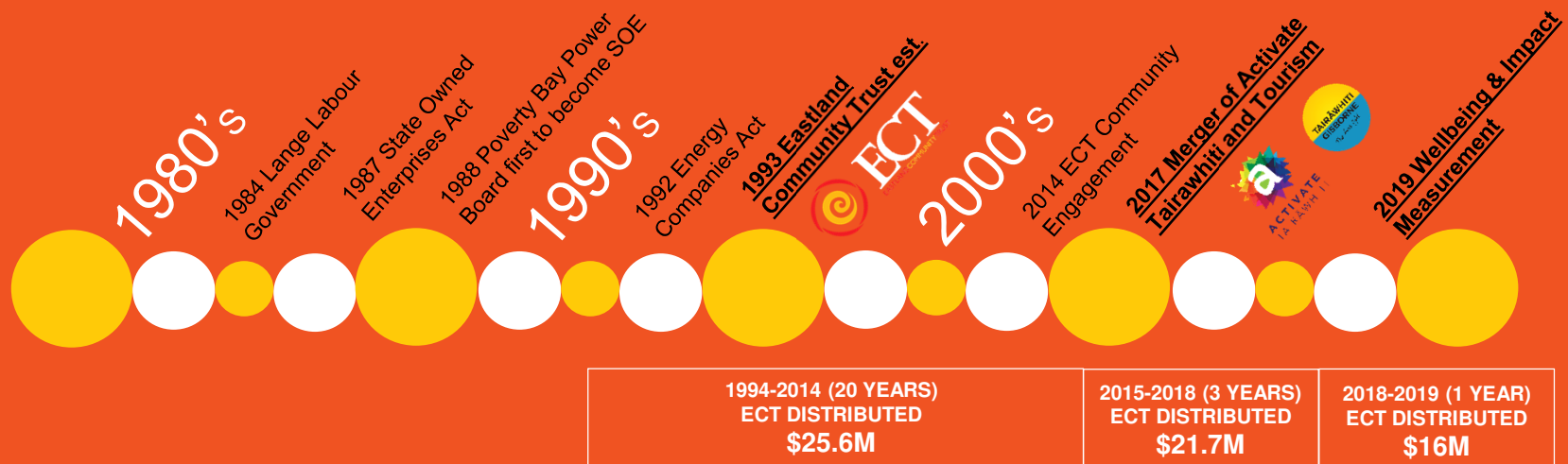
BoardPro
Smart Board Software

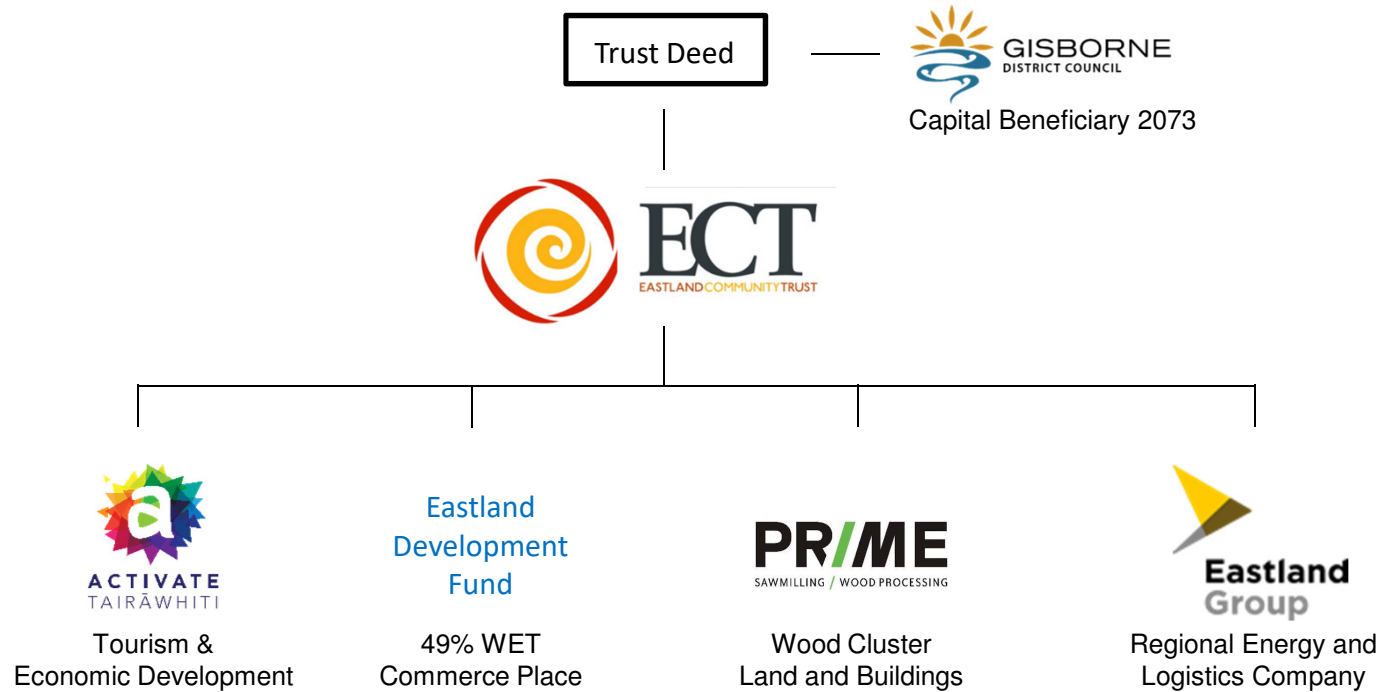


LIVING WELL TOGETHER TŪ ORA AI TĀTOU

EASTLAND COMMUNITY TRUST
ERINA HURIHANGANUI

WHAKAPAPA





COMMUNITY WELLBEING

Following a strategic review in 2018, Eastland Community Trust committed to a work programme to understand and develop wellbeing.

- Community wellbeing measurement framework
- Distribution decision tool
- Impact measurement tool



WHY COMMUNITY WELLBEING?

Beyond GDP – a growing discomfort with GDP as a measure of ‘a good life’ or living life well in a way that matters to people.

WHAT'S OUT THERE?

Literature review and horizon scan of 57 frameworks both nationally and internationally.

Established a preliminary wellbeing framework with a suggested definition and set of possible domains, determinants and measures.



RELEVANCE OF CWB TO SDGS



(Source: <http://www.undp.org/content/undp/en/home/sustainable-development-goals.html>)

A call to action to end poverty, protect the planet and ensure that all people enjoy peace and prosperity

WHAT IS COMMUNITY WELLBEING?

*“the experience of living well together in community,
in a way that matters to the members of the
community”*

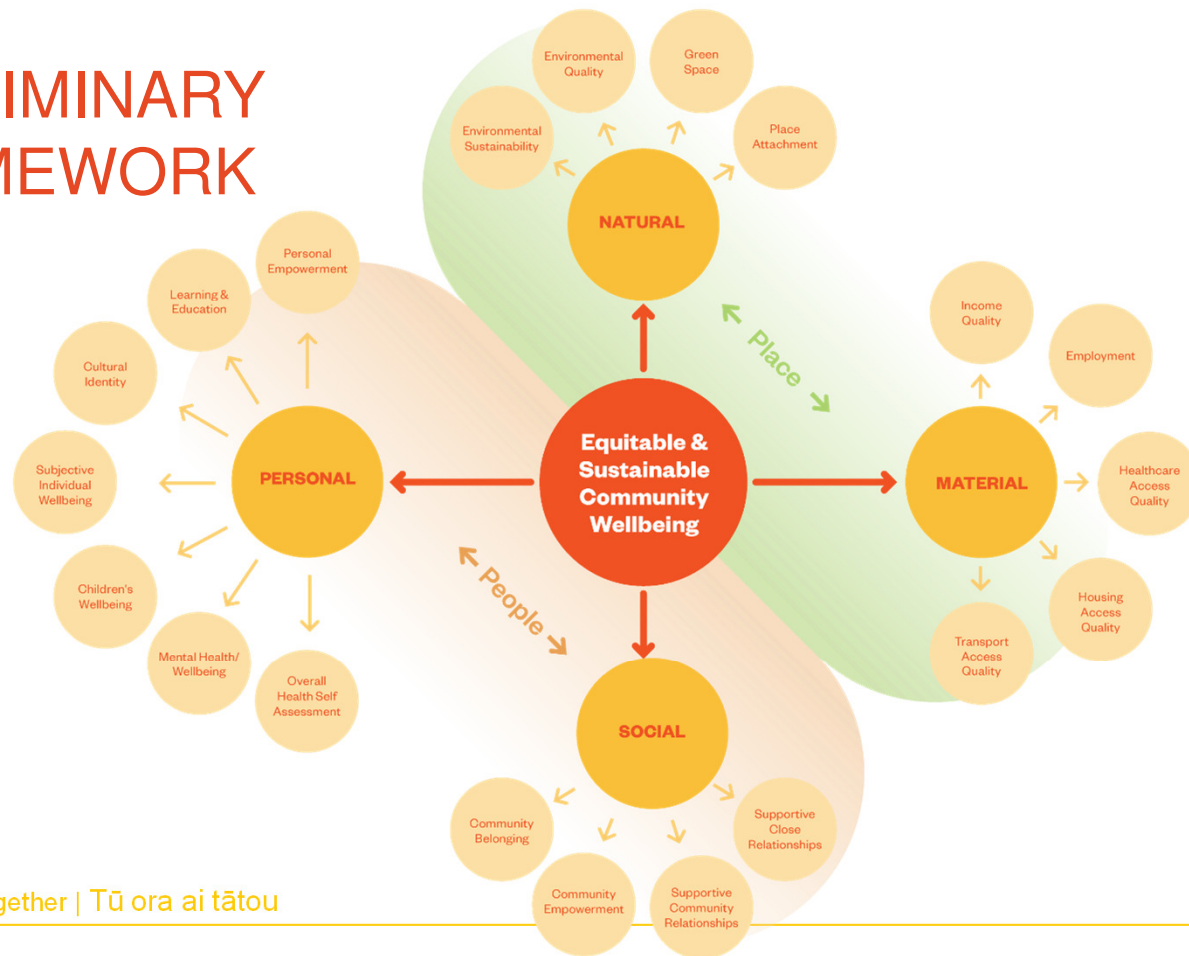
Equity

Absence of difference in community wellbeing among groups of people that are unnecessary, avoidable, unfair and unjust

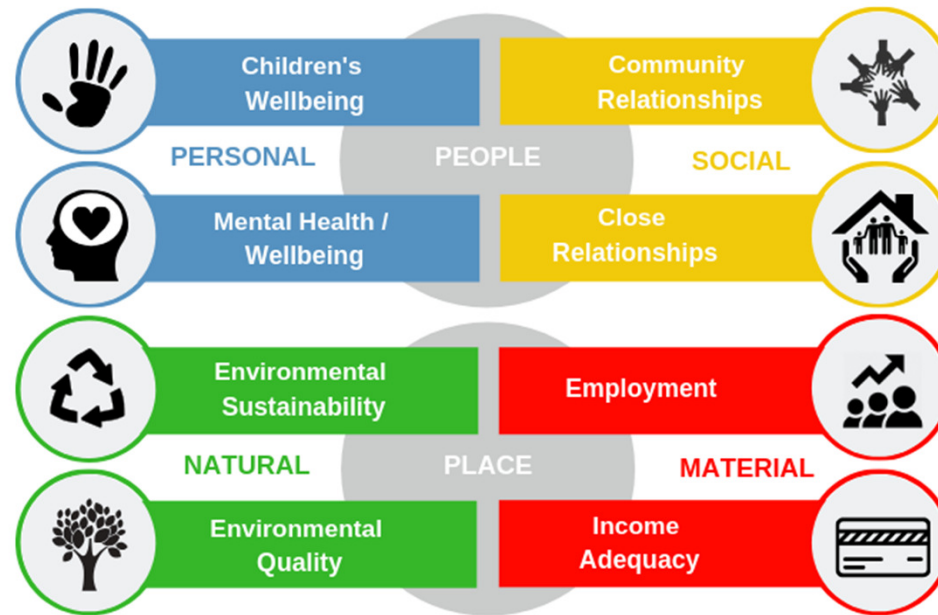
Sustainability

Sustainability of community wellbeing over time from year to year as well as inter-generational

PRELIMINARY FRAMEWORK



INITIAL DETERMINANTS



COMMUNITY ENGAGEMENT

Reach far, wide and deep with people, whanau and groups across Tairāwhiti.

Build a robust and authentic picture of our community wellbeing aspirations.

Identify communities and groups where actions towards the enhancement of community wellbeing are prioritised and underway



COMMUNITY LED DEVELOPMENT

- Strengths based
- Solutions focused
- Nothing for us, without us
- Local knowledge and expertise valued
- Economic development is not isolated but is inter-dependent and within social, political, environmental and cultural elements





THANK YOU | TĒNĀ KOUTOU

Thank you

Brought to you by



Philanthropy New Zealand Sponsors

